

SLIMLINE



The Slimline, our most popular bag, is designed for the mountaineer or backpacker who must keep weight and bulk to a minimum without sacrificing warmth. The snug, form-fitting Slimline shell minimizes heat loss, resulting in a more efficient, warmer bag. A 7½" differential cut allows maximum lofting of the "600" goose down, while slanting Chevron baffles sewn at 5" intervals stabilize the down. Each tube is individually sewn off to positively eliminate down shift between tubes. The Slimline is a versatile bag for use under all but the most extreme conditions. The shell is made of the finest water-repellent Tenaya nylon. A nylon double slider zipper is available on either right or left side so that the Slimline may be ordered in matching pairs that zip together. The double slider arrangement also allows the bag to be opened from head and foot for maximum ventilation and temperature control. Self-forming draw cord hood. Colors are blue or green. Supplied with stuffsack.

SLIMLINE 1 (will fit persons up to 5'-8"). Fill weight 22 oz. Wt. 44 oz. Price: \$189.00

SLIMLINE 3 (will fit persons up to 6'). Fill weight 24 oz. Wt. 47 oz. Price: \$198.00

SLIMLINE 5 (will fit persons up to 6'-5"). Fill weight 28 oz. Wt. 49 oz. Price: \$210.00

NORRLAND



The Norrland is cut fuller at the shoulder and elbow sections than the Slimline bag.

Recommended for those who feel confined by the slimmer mummy style. Shell is light, downproof Tenaya nylon. A 10" differential cut allows full lofting of the "600" goose down. Down shift between tubes is eliminated by closing each tube individually.

Slanting Chevron baffles sewn at 5" intervals stabilize the down. Norrland bags may be ordered in matching pairs that zip together. 72" double slider nylon coil zippers on right or left side.

Bag may be opened from head and foot for maximum ventilation in warmer weather. The Norrland is supplied with stuffsack. Self-forming draw cord hood. Color is green.

NORRLAND 2 (will fit persons up to 5'10"). Fill weight 34 oz. Wt. 57½ oz. Price: \$245.00

NORRLAND 4 (will fit persons up to 6'2"). Fill weight 39 oz. Wt. 62½ oz. Price: \$265.00

Trailwise bags are available with a 6 oz. down overfill for \$35.00 extra. Specify "overfill" when ordering and allow 3-4 weeks for delivery.

MANATEE



The Manatee is an all-around 3 season bag with Tenaya nylon shell and Polarguard® fill. Polarguard® developed by Celanese, retains its insulating qualities through repeated soakings and abuse. It absorbs only 1/10 of 1% of its weight in water so that, even if the Manatee gets wet, it is quickly and easily dried in the sun. Being a synthetic fiber, Polarguard® is the logical choice of those who get sneezy around down. Modified mummy styling. Lateral baffling. Drawcord hood. Two-way separating nylon zipper on right or left side allowing bags to be zippered together. Color: blue or green.

MANATEE 2 (will fit persons up to 5'10") Approximate fill wt. 52 oz. Wt. 60 oz.

Price: \$79.00

MANATEE 4 (will fit persons up to 6'2") Approximate fill wt. 56 oz. Wt. 64 oz.

Price: \$84.00

MINATAUR



The top of the line in Trailwise PolarGuard® bags. This is a true four-season bag with a temperature rating of 0°.

The top is constructed of four layers of PolarGuard®. Only the two shell layers are quilted 5.3 oz. PolarGuard® leaving the two thick inner layers of 8 oz. PolarGuard® to reach maximum loft with no cold spots. The same superior construction is continued on the bottom three layers of 5.3 oz. PolarGuard®

leaving the two thick inner layers of 8 oz. PolarGuard®. Although this complicated layering of the PolarGuard® takes a little longer, Trailwise feels that it adds warmth while still holding weight to a minimum, yielding an extremely efficient insulating system. The bag has an outstanding ratio of warmth to weight for a synthetic fill. Double slider zipper. Right and left Minataur's any Trailwise bag will zip together to form a double bag. Available in blue Tenaya nylon. Comes with stuffsack.

MINATAUR 2 (will fit persons up to 5'10") Approximate fill weight 64 oz. Wt. 4 lbs. 12 oz. Price: \$108.00

MINATAUR 4 (will fit persons up to 6'2") Approximate fill weight 68 oz. Wt. 5 lbs. 4 oz. Price: \$115.00



ENSOLITE SLEEPING PAD

Unicellular material will not soak up water like foam rubber. Reasonable comfort with superior insulation from ground cold and dampness. 3/8" thick.
 18" x 42". Wt. 14 oz. Price: \$6.50.
 21" x 56". Wt. 20 oz. Price: \$9.50

POLYURETHANE MAT

Convuluted polyurethane 2" overall thickness provides excellent comfort. 21" x 50" Wt. 22 oz. Price: \$4.50

SIERRA WEST SUPER FOAM PAD

Two pieces of foam, one of closed cell 1/4" Duralite and one of extra firm 1 1/4" polyurethane, combine to make this an excellent pad for all seasons. Excellent thermal efficiency and comfort. The cover is coated nylon on the bottom and non-slip breathable fabric on top. Two reinforced tie tapes. 20" x 50" x 1 1/2". Colors: blue, red or green. Wt. 32 oz. Price: \$18.50

SIERRA WEST 72" FOAM PAD

Covered polyurethane foam mat. Waterproof nylon bottom cover and breathable non-slip fabric on the top. 20" x 72" x 1 1/2". Colors: blue, red or green. Wt. 41 oz. Price: \$20.00

THERMA-REST PAD

A self-inflating mattress combining the best features of an air mattress with those of a foam pad. Made with an airtight outer shell surrounding an open-cell foam core. Deflated by opening a valve and rolling the air out. Mattress remains rolled when valve is closed. Inflated size: 47" x 19" x 1 1/2". Rolled size: 5" x 19". Color: yellow. Wt. 23 oz. Price: \$32.00

AIRLIFT MATTRESS

A unique design of individual polyvinyl air tubes in separate compartments within a ripstop nylon taffeta shell. Nylon zipper closes shell to keep out dirt and debris. Tubes are individually inflated and if punctured can be removed and a spare inserted. Stuffsack and spare tube included.

- 42" x 20" Wt. 20 oz. Price: \$19.50 Extra 42" Tube Price: \$1.50
- 72" x 22" Wt. 40 oz. Price: \$29.50 Extra 72" Tube. Price: \$2.25

SLEEPING BAG STORAGE SACK

An oversized, breathable fabric sack for storing your sleeping bag without crushing the down. 12" x 35" with drawstring closure. Adaptable for a variety of uses. Color: assorted. Wt. 8 oz. Price: \$5.00

SLEEPING BAG COVER/BIVOUCAC SAC

Rectangular shape to fit sleeping bag. Coated nylon bottom panel is waterproof and measures 43" x 90". Breathable top panel is 41" x 76". 50" nylon coil zipper is located on one side for easy access. Corner grommets. Will double as a tarp or groundsheet. Stuffsack included. Color: assorted. Wt. 18 oz. Price: \$31.00

SIERRA WEST 2-MAN GROUND SHEET

A single 60" x 96" piece of waterproofed ripstop nylon with eight reinforced grommets around the perimeter. Color:assorted. Wt. 15 1/2 oz. Price: \$17.00

TRAILWISE STUFFBAGS

Made of lightweight coated waterproof nylon. Drawcord closure with nylon slide lock.

- 4" x 6" Wt. 1 oz..... \$1.50
- 5" x 10" Wt. 1 3/4 oz..... \$1.65
- 7" x 11" Wt. 2 oz..... \$2.25
- 7" x 18" Wt. 2 1/4 oz..... \$2.50
- 9" x 18" Wt. 2 1/2 oz..... \$2.75
- 9" x 21" Wt. 2 3/4 oz..... \$3.00

SIERRA WEST COMPRESSOR BAG

A heavy nylon duck stuff bag measuring 13" x 22". Three adjustable nylon straps can be tightened to further compress contents, reducing bag diameter to 6". Good for bulky sleeping bags. Wt. 5 oz. Price: \$9.00

STEBCO AIR PILLOW

Inflatable nylon. Size: 15" x 18". Color: green. Wt. 5 oz. Price: \$3.50

SPORTS HAMMOCK

Our nylon mesh hammock is a favorite year after year. More than a bed, it can also be used for suspending supplies in camp or as a rescue stretcher. Tie ropes and metal attachment rings are included. Full size 4' x 6 1/2' net rolls into a pocket size ball. Price: \$7.00

DOUBLE HAMMOCK

Oversized for comfort. The netting stretches to approximately the size of a standard double bed. Made of 100% nylon cord capable of supporting 2,000 pounds. Braided tie ropes and metal attaching rings. Price: \$19.95





SNOWSHOE FURNITURE

Handcrafted by Tubbs of Vermont from selected New England hardwood and varnished rawhide. Each piece is carefully and individually developed from its earliest stages to its final dipped and deep-penetrating urethane finish. As a result, no two pieces are exactly alike. Solid Yankee craftsmanship, tradition, and beauty characterize these unique pieces of furniture. Weather resistant finish makes furniture suitable for indoor and outdoor use.

FOLDING CHAIR — Overall ht. 28". Seat ht. 8"
 Shipping wt. 10 lb. \$60.00
 Shipping and handling anywhere in the U.S. \$ 5.00

ROCKER — Overall ht. 34", Seat ht. 17"
 Shipping wt. 15 lbs. \$100.00
 Shipping and handling anywhere in the U.S. \$ 5.00

LOVE SEAT — Overall ht. 34", Seat ht. 17"
 Shipping wt. 20 lbs. \$155.00
 Shipping and handling anywhere in the U.S. \$ 5.00

COFFEE TABLE — Oval-shaped solid wood top, 18½ x 39 in. laced to wooden frame. 14 in. high with a laced lower shelf.
 Shipping wt. 13 lbs. 2 oz. \$85.00
 Shipping and handling anywhere in the U.S. \$ 5.00



ALADDIN LAMPS

Exclusive mantle/burner makes Aladdin the most efficient kerosene burning lamp ever designed. Burning a blend of 94% air and 6% kerosene, these lamps emit a steady white light adjustable in intensity from candle-glow to the equivalent of 100 watts of electric light. Fuel consumption is 50 hours per gallon of kerosene. Aladdin lamps are smokeless, odorless and silent.

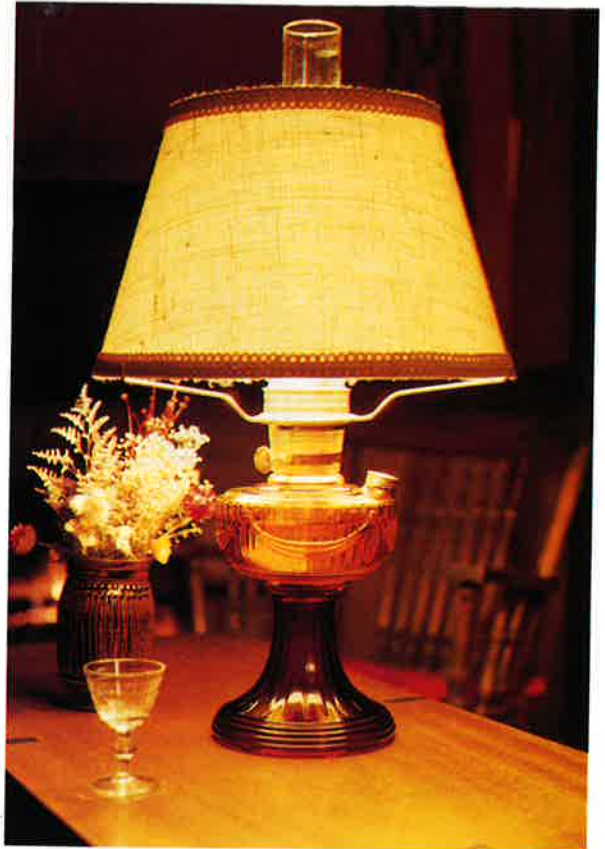
LOW-BOY

The Low-Boy is an inexpensive, dependable, all-purpose table lamp for camp or home. Simple aluminum fount without separate base keeps weight low for stability. Comes complete with mantle, wick, and wick cleaner. Wt. 1 lb. 5 oz. Price \$26.50



COLONIAL

An authentic reproduction of the original Aladdin lamp, the Colonial is fashionably functional. Distinctive hand-blown amber glass base. Burlap shade provides soft light for setting the mood. Burns 12 hours on one quart of kerosene and puts out a light intensity equal to a 75 watt electric bulb. Wt. 5 lbs. Price: \$46.50



TURN OF THE CENTURY

Elegant charm and nostalgia combined in an efficient, reliable kerosene lamp recalling the fabulous "gas light" era. Bowl and burner are polished brass, complemented by Aladdin's white glass shade — an original design of hand-painted dogwood blossoms. Overall height 23½". Whether you use it as a distinctive "decorator touch" in accent lighting or as a primary source of light, the Aladdin lamp is always dependable. Wt. 4 lbs. 2 oz. Price: \$67.50

PARTS FOR ALADDIN LAMPS

CHIMNEYS. Reg. (use under 5,000 ft.) Wt. 7 oz.	\$5.00
High Altitude (use over 5,000 ft.) Wt. 8 oz.	\$5.25
MANTLE. Wt. ½ oz.	\$1.75
WICK. (Specify burner model "C" or "23" as indicated on adjusting knob.) Wt. 1 oz.	\$1.95
WICK CLEANER. Wt. ½ oz.	\$.65

VACUUM BOTTLES

Battleship strong and backed with a five-year factory guarantee, these unbreakable bottles by Aladdin/Stanley will keep your coffee steaming hot (or your martinis frosty cold) all day long. Stainless steel liner is safe and sanitary — can't rust, stain or absorb odors. Best of all there is no glass to break. Two quart size comes with a pail type handle for easy carrying.

1 pt.	Wt. 15 oz.	Price \$21.50
1 qt.	Wt. 20 oz.	Price \$25.50
2 qt.	Wt. 28 oz.	Price \$32.50



MINITIME ALARM CLOCK

Perfect for people on the go. This compact clock tucks conveniently into your suitcase or pack. An attractive compact cube, measuring 1 1/2" x 2" x 2 1/2", and operating one year on a single AA battery (not included). 6 transistors, 4 jewels, luminous dial, sweep second hand, fast/slow adjustment and travel case. Color: black. Weight: 4 oz. Price: \$25.00. "AA" Alkaline Battery: \$.85



YAKIMA CAMP BLANKET

A Pendleton classic. Just what you need for cabin, camp or the trunk of your car where it is ready for any outing. Loomed from a blend of 86% wool and 14% cotton warp you can expect a lifetime of wear and faithful service from the Yakima blanket. Color: grey with border stripes of red, black and green. Size: 84" x 66". Price: \$30.00



PUCARA BLANKETS

Prized Alpaca wool, virgin sheep wool, and cotton are blended in Peru to create a distinctive blanket that is wonderfully soft and beautiful. Used as a bedspread, wall hanging, throw or blanket, the reversible weaving of natural colors and intricate patterning will add special warmth to any home. Sizes: 68" x 90". Choose from two designs: Llamas or Sumaq. Price: \$70.00

MISCELLANEOUS

RESCUE BLANKET

Reflects up to 90% of a person's body heat while keeping out rain, wind and snow. Remains flexible at temperatures as low as -60°. Folds to 1½" x 2" x 4". Opens to 56" x 84". Wt. 2 oz. Price: \$1.85

SPACE SPORTSMAN BLANKET

56" x 84" blanket, reflects up to 80% of the body's warmth, yet folds to 5½" x 8" and weighs 11 ounces. Waterproof and windproof. It will never crack, rot or mildew. Bound edges and grommets corners. Blanket may be used as a ground-sheet, windbreak, trap, etc. Price: \$7.75

16" BUNJI CORD

Elastic cord with strong hooks on each end. Wt. 2 oz. Price: \$.50

NYLON CORD

¼" cord; 550 lb. test.
50' Hank, 3 oz. Price: \$1.25
100' hank, 6 oz. Price: \$2.25

DRAWSTRING CLAMP

Spring-loaded plastic clamp that will hold drawstrings up to parachute cord size on parkas, hoods, packs, etc. 3/\$1.00

PLASTIC MATCH BOX

Waterproof hard plastic. Cork gasket, striking flint. 2¾" x 1". Wt. 1½ oz. Price: \$.75

WATERPROOF MATCHES

Box of 50. Wt. ½ oz. Price: \$.50

PLASTIC TROWEL

A 6" general purpose, sturdy trowel. Wt. 2 oz. Price: \$.75

UTILITY POUCHES

Flat clear waterproof plastic envelopes with slide closures.

8" x 11" Wt. 2 oz. . . . 2/\$1.00
9½" x 13" Wt. 4 oz. . . . 2/\$1.30
12" x 16" Wt. 8 oz. . . . 2/\$1.50

FLUFFY DOWN SOAP

A special soap for down-filled garments and sleeping bags. Biodegradable and easy to use. Av. wt. 3 oz. Price: \$4.00

VELCRO TAPE

¾" hook-and-pile tape, used for closures on pockets, cuffs, flaps, etc. Strong and long-lasting. Colors: grey, green, navy and beige. Per ft. \$.60

RIPSTOP REPAIR TAPE

2" wide Ripstop material with adhesive backing. Quick repair for rips. Colors: red, blue, green, orange. 25' roll Price: \$3.50

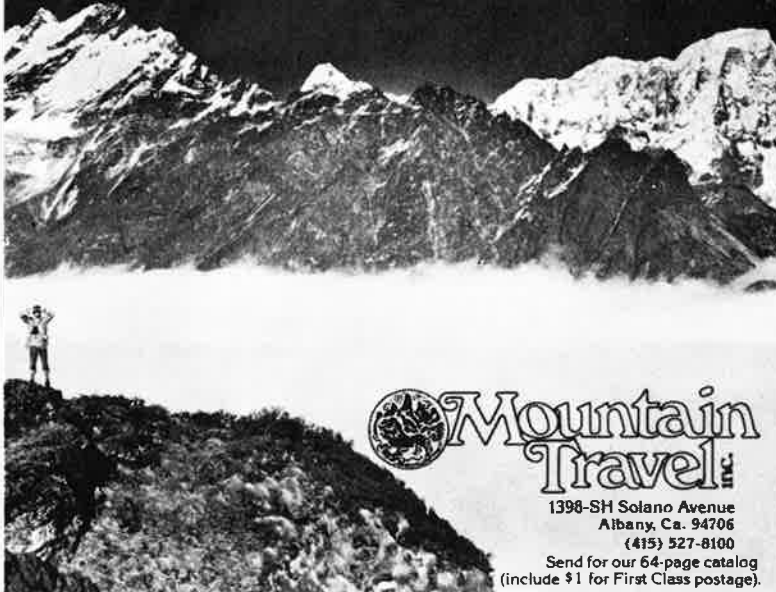
SEAM SEALANT

A clear liquid for waterproofing nylon seams in tents, groundsheets, rainwear, 2 oz. tube with applicator. Price: \$1.75

GORE-TEX® SEAM SEAL

Especially designed for adherence to Gore-Tex laminates. Two ounce tube with applicator is enough to coat the seams of one garment. Price: \$2.25

80 EXPEDITIONS & OUTINGS TO VIRTUALLY EVERY WILD, REMOTE & ROMANTIC PLACE ON EARTH . . . COUNTRY WALKS, MOUNTAINEERING, RIVER RUNNING, DESERT CARAVANS . . . THE HIMALAYAS, THE HEBRIDES, THE ANDES, ALASKA AND MUCH MORE . . .



Mountain Travel
1398-SH Solano Avenue
Albany, Ca. 94706
(415) 527-8100
Send for our 64-page catalog
(include \$1 for First Class postage).

THE SKI HUT RETAIL STORES

We always welcome your visit to our original store in Berkeley or our store in Palo Alto. Both stores carry all of the items found in this catalog plus a variety of other merchandise for your outdoor needs. When you're in the San Francisco Bay Area feel free to come in and browse — we enjoy meeting our mail order customers in person.

When you stop in to see us you will find in addition to the items in this catalog, a complete selection of cross-country and downhill ski equipment and clothing. Running shoes for men and women and a variety of lightweight running clothing. Our boating department is one of the largest in Northern California and features kayaks, inflatable boats and accessories. We also stock an extensive selection of outdoor books, guide books and topographic maps.

As a service to our local customers both our stores offer a select group of backpacking equipment, cross-country and downhill ski equipment for rent. During the ski season we have a complete service and repair shop for cross-country and downhill skis.

The Ski Hut and Trailwise, our sister corporation, are proud of their position of continuing leadership in supplying the increasing demand for high-quality outdoor equipment. Considerable thought, experience, and care go into all the items we offer in our catalog, from Trailwise or from other manufacturers. New designs are field-tested by our own staff and by friends with additional knowledge and experience in thoroughly evaluating any given piece of equipment. We all take pride in the quality of the merchandise we offer our best friends — our customers.

BERKELEY

1615 University Ave.
Berkeley, Ca. 94703
(415) 843-6505

Monday-Saturday: 9:30-6:00
Wednesday & Thursday: 9:30-9:00
June-September
Sunday: 12:00-4:00
Thanksgiving-Christmas: Sunday, 12-4

PALO ALTO

222 University Ave.
Palo Alto, Ca. 94301
(415) 321-2277

Monday-Saturday: 9:30-5:30
Thursday: 9:30-9:00
Thanksgiving-Christmas: Sunday: 12-4



SIERRA WEST GOOSE DOWN COMFORTER

The fully baffled Sierra West goose down comforter is distinctly superior to the sewn-through comforters widely available on today's market. Because they are not quilted but fully baffled, maximum loft and even heat distribution are achieved. The baffles are tuck-stitched to the outer shell so there is no exposed stitching that may chafe, snag, or wear. The shell fabric, Trinyl, was selected for its elegant soft texture as well as durability and downproofness. It is a blend of cotton, polyester and nylon with a lightly textured finish that is a pleasure to sleep under and will not slide off the bed. Sierra West comforters are designed to provide a lifetime of enjoyment and comfort. Color: light blue/sand. Each comforter comes with a large storage stuff sack.

KING SIZE 96"x100"	3 lbs. goose down fill	\$275.00
QUEEN SIZE 82"x96"	2½ lbs. goose down fill	\$225.00
TWIN SIZE 60"x84"	1½ lbs. goose down fill	\$145.00

THE SKI HUT
 P.O. Box 309
 1615 University Ave.
 Berkeley, Ca. 94701

BULK RATE
 U.S. Postage Paid
 The Ski Hut

27732
 GREG GRANT
 3717 WENBROOK
 DAYTON OH 45429

Address Correction requested